



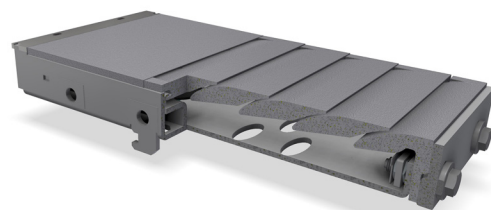
Coanda Wing® - the latest revolution in grate plate design

IKN introduces the Coanda Wing®, its latest development in grate plate technology. Coanda Wing® technology is installed in all new coolers and can be used to upgrade existing installations. The shape of the Coanda Wing® was designed using advanced CFD simulations resulting in optimised air flow and significantly reduced turbulence. The resulting slots between the new Coanda Wings provide a continuous self-cleaning effect with reduced grate resistance. They are specially suited for the extreme operating conditions in a modern cement plant.

- + Increased air speed
- + High-precision, self-cleaning slots
- + Extremely wear resistant
- + Uniform pressure loss

IKN technology in brief

The Coanda Wing® technology is installed into completely new designed boxes which are produced using state-of-the-art manufacturing technologies. This ensures optimal dimensional accuracy, allowing a seamless installation into the entire grate area. The new patented front plate is designed to fulfill the high wear and temperature resistance requirements inside the cooler and, at the same time, allow easy maintenance. New Coanda Wing® grate plates are fully compatible with the existing Coanda Nozzles and can be upgraded compartment-wise within existing grates. The best location to start an upgrade is the first compartment after the fixed inlet.



Grate plate box with Coanda Wing® technology



www.i kn.eu